
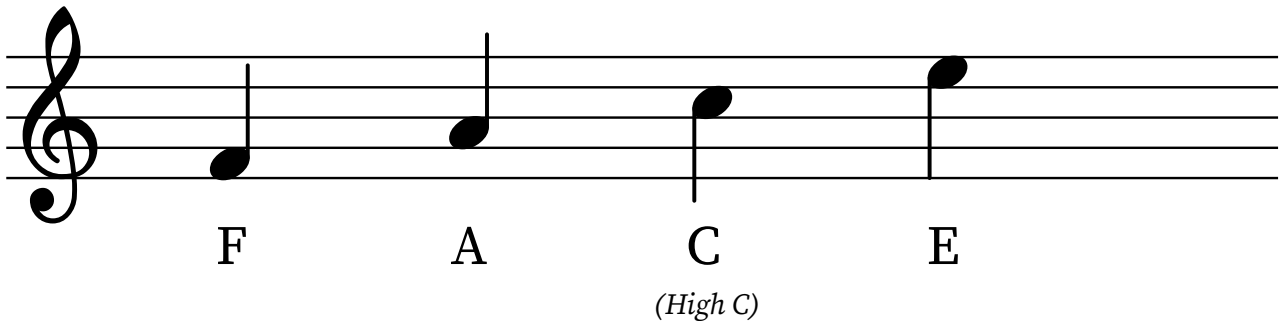


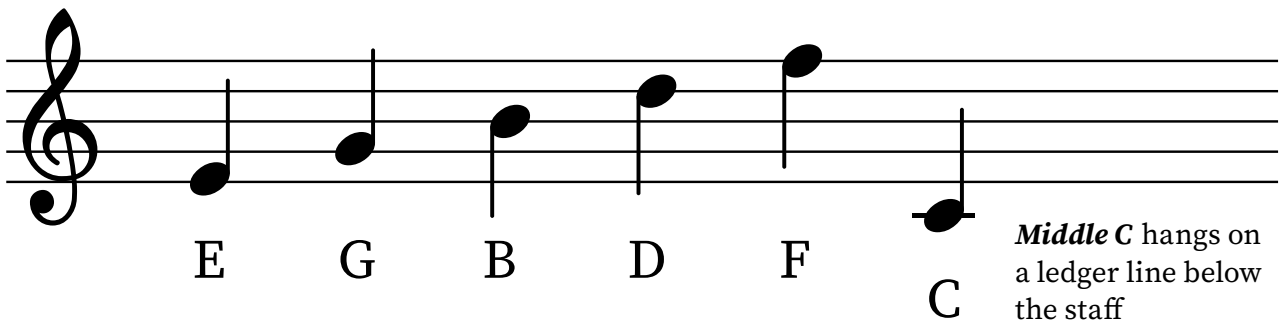
Treble Clef Notes

Treble Clef = a staff symbol  that shows that the notes on the staff are higher notes, usually played by the Right Hand.

Spaces can be remembered using the word **F A C E**



Lines can be remembered using the phrase **Every Good Boy Does Fine**



Middle C hangs on a ledger line below the staff

In harp music, certain strings are color coded.

F

Blue strings
& notes are **F**

C

Red strings
& notes are **C**