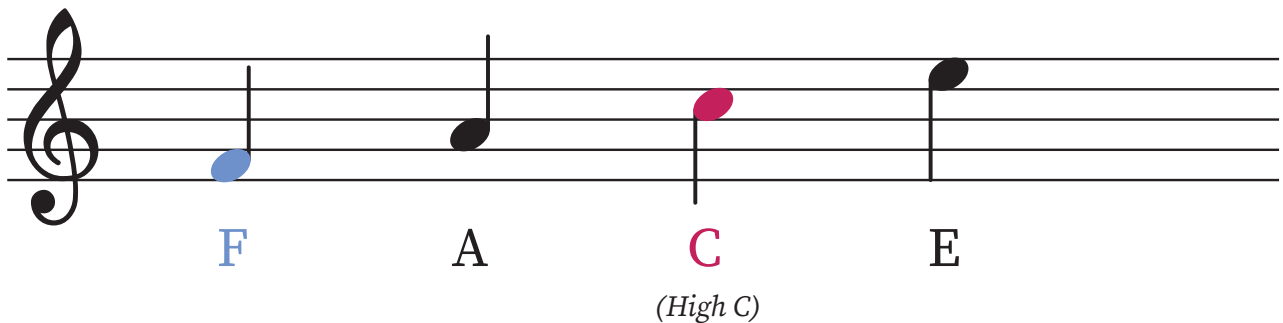


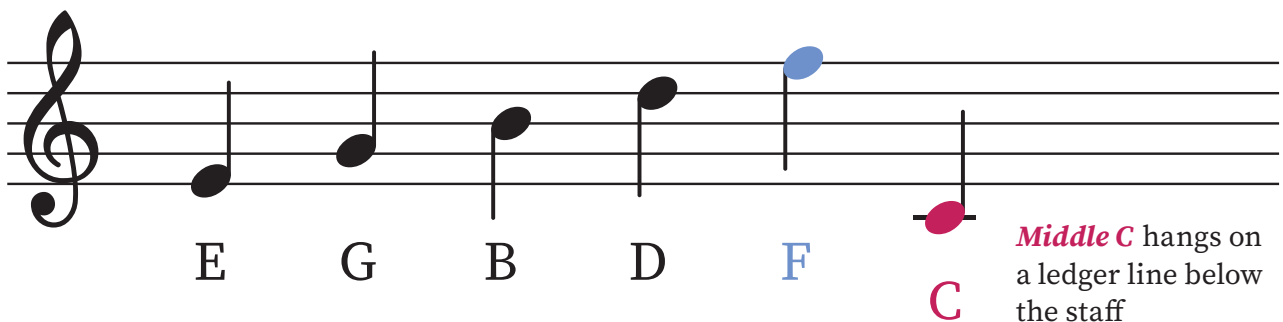
Treble Clef Notes

Treble Clef = a staff symbol  that shows that the notes on the staff are higher notes, usually played by the Right Hand.

Spaces can be remembered using the word **F A C E**



Lines can be remembered using the phrase **Every Good Boy Does Fine**



In harp music, certain strings are color coded.



Blue strings
& notes are **F**



Red strings
& notes are **C**